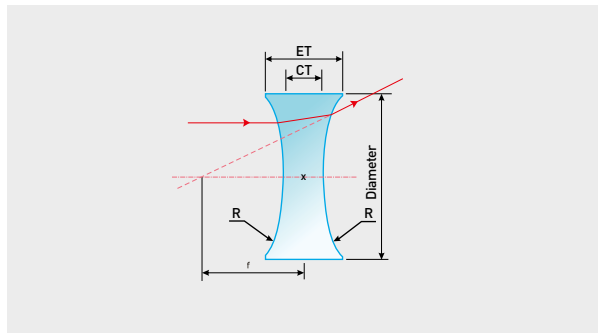
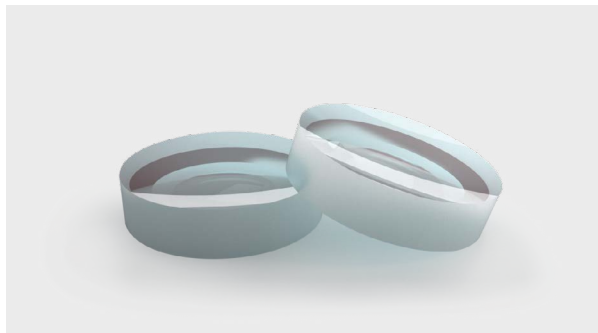


Bi-concave spherical lenses



Bi-concave spherical lenses feature two spherical concave surfaces with the same radius of curvature, while their focal length is negative. The performance of these lenses is best when used for finite

conjugate (0,2X - 5X ratio) applications, most often to diverge converging light.

Main features

- Fabricated from high-quality UV grade fused silica, BK7 glasses
- Standard diameter is $\varnothing 25,4$ mm
- Focal length selection from -25 mm to -100 mm
- Antireflective coating, custom substrate material, dimensions, and focal lengths available upon request

Application examples

- Beam expanders
- Relay imaging

Standard specifications

BI-CONCAVE SPHERICAL LENSES	
Substrate material	BK7, UVFS
Wavelength range	Uncoated BK7 lenses: 350 nm - 2 μ m Uncoated UVFS lenses: 185 nm - 2,1 μ m
Clear aperture	>90%
Diameter tolerance	+0/-0,1 mm
Center thickness	2 mm
Thickness tolerance	$\pm 0,5$ mm
Centration error	<3 arcmin
Focal length tolerance	$\pm 3\%$ @632,8 nm
Protective chamfers	<0,35 mm at 45°
Surface quality	40-20 S-D
Surface irregularity	$\leq \lambda/8$ @632,8 nm
Coatings	Uncoated, available upon request

Standard products

MATERIAL	DIAMETER	FOCAL LENGTH	SKU	PRICE
BK7	$\varnothing 25,4$ mm	-25 mm	7576	28 €
		-50 mm	7577	28 €
		-75 mm	7578	28 €
		-100 mm	7579	28 €
UVFS	$\varnothing 25,4$ mm	-25 mm	7580	72 €
		-50 mm	7573	72 €
		-75 mm	7574	72 €
		-100 mm	7575	72 €