

# 40 FR40-F(F40)

Support wavelength:1064nm

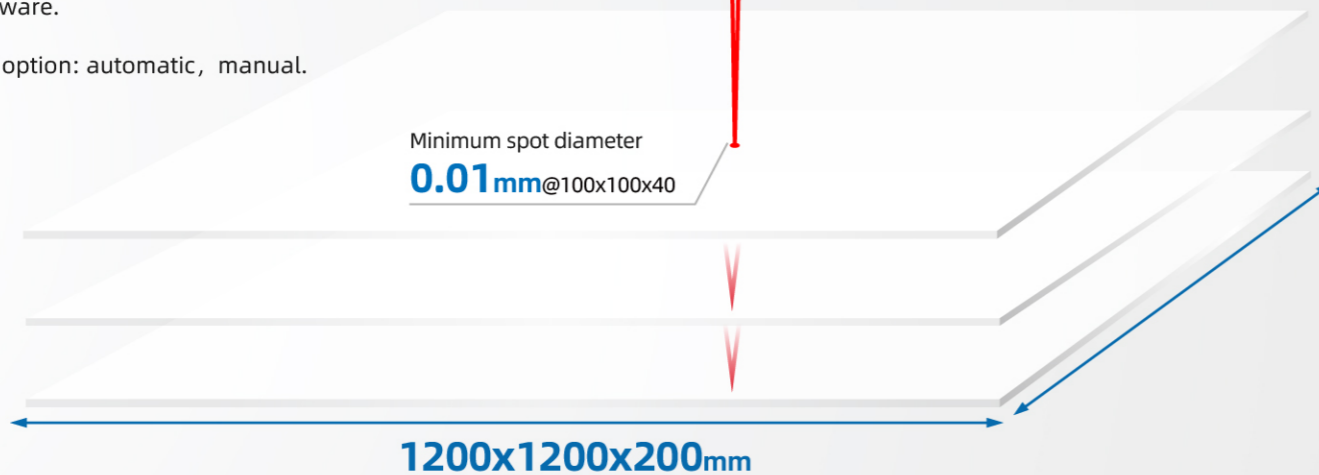
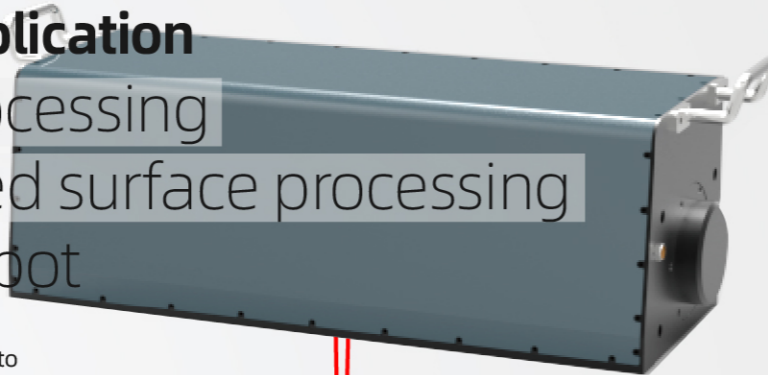
## High-end industry application

Super large field processing

Large Z-depth curved surface processing

Extreme fine focus spot

- Optional water cooling design, it can be applied to high-temperature drift requirements.
- Automatic focal adjust option for choose, finish work field and focal length switch through software.
- Focal adjust option: automatic, manual.



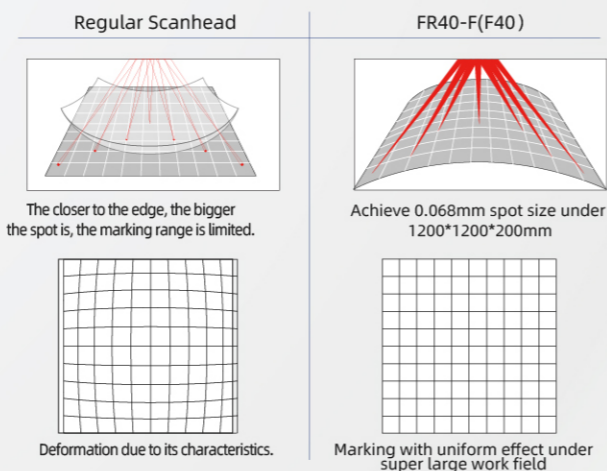
### Large Z-depth curved surface processing

Through the dynamic focus system control, the Z-depth can reach 200mm with fine spot quality under 300\*300mm to 600\*600mm work field. It is specifically suited for the environment of large height differences as well as large curved surface processing and is widely used in automotive interior and exterior accessories.



### Flexible large

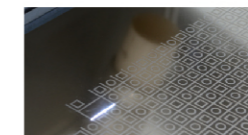
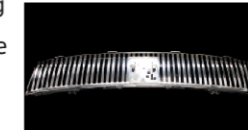
Through the dynamic focus system control, it can be operated from 100\*100\*40mm to 1200\*1200\*200mm work field.



### Application Highlight



- large field marking
- Engraving
- Cleaning
- Mould Texture
- Filming
- Precision Processing
- 3D surface treatment
- Laser Scribing
- Mould Texture
- 3D printing



### Product Technical Information

Technical Info.		Specifications									
Items	Input Voltage(VAC)	100V60HZ / 220V50HZ									
	Output Voltage(VDC)	±24VDC									
	Current(A)	5A ( 2 Sets)									
	Output Interface	XY2-100 Protocol									
	Input Interface	Communication interface USB									
	Weight ( KG)	21.5									
	Size(mm)	547.5*200*184.5									
Optical Specifications	Aperture Size(mm)	40									
	Input beam diameter(mm)	7									
Galvanometer Specifications	Scan Angle(°)	±10									
	Repeatability(μrad)	5									
	Max.Gain Drift(ppm/k)	50									
	Max.Offset Drift(μrad/k)	15									
	Long-term drift over 8h(mrad)	≤0.2									
	Tracking Error(ms)	≤0.7									
	Max.processing speed(characters/s)	350@200*200									
Working Field & Spot Diameter	Working Field(mm)	100x100x40	200x200x20	300x300x50	400x400x100	500x500x100	600x600x150	800x800x200	1000x1000x200	1200x1200x200	
	The Min.Spot Diameter@1/e <sup>2</sup> (mm)	0.01	0.014	0.019	0.025	0.030	0.034	0.044	0.056	0.068	
	Focal length(mm)	120	240	360	480	600	720	960	1200	1440	

