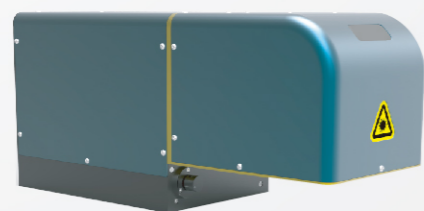
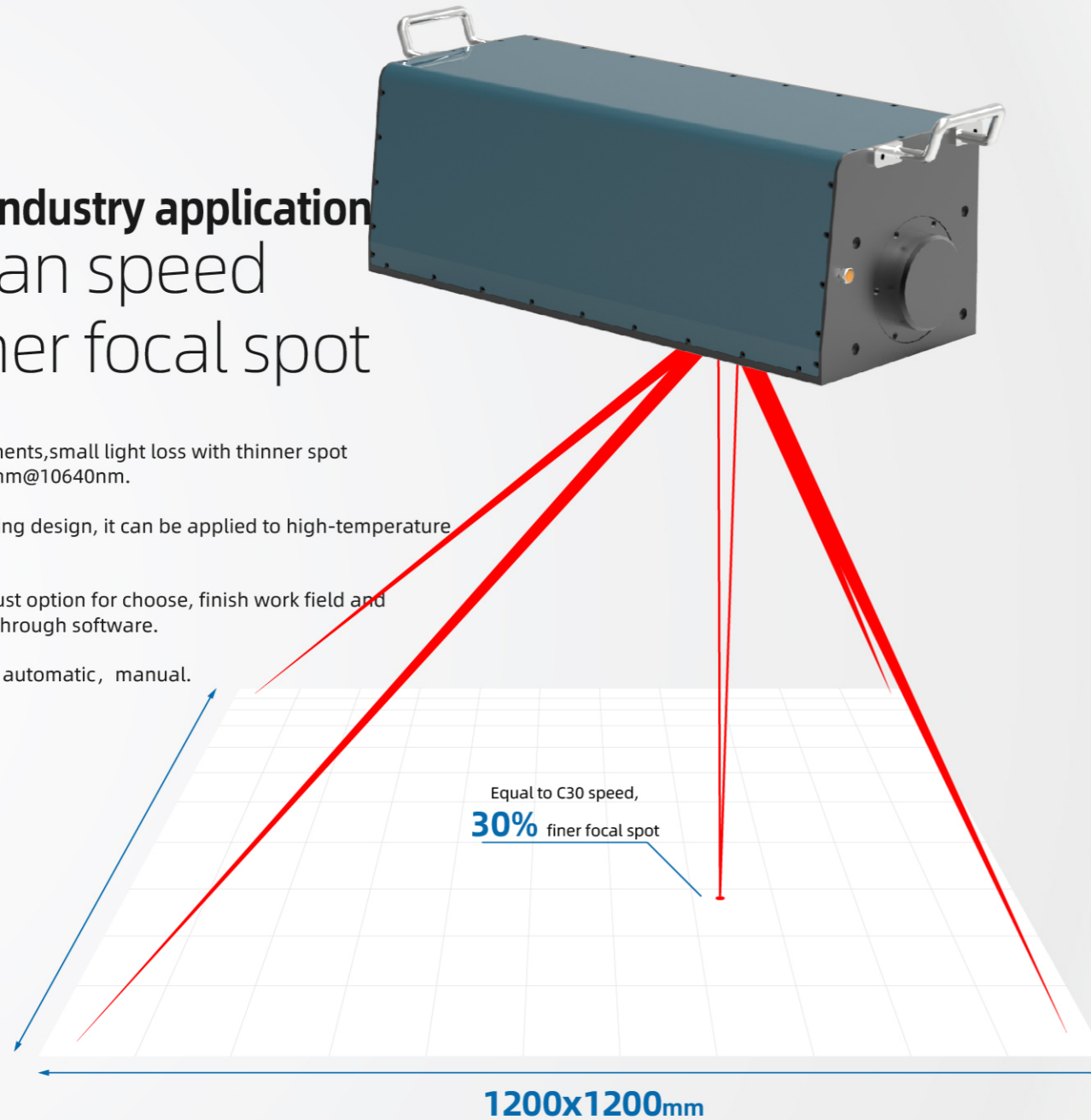


# 40 FR40-C(C40)

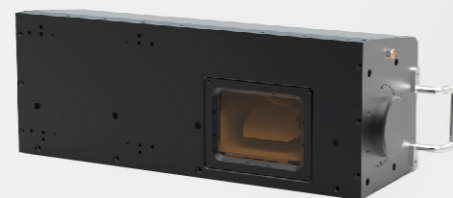
Support wavelength:10640nm、10200nm、9400nm

**High-end industry application**  
 Max.scan speed  
 30% finer focal spot

- II-IV optical components,small light loss with thinner spot 0.12mm@150x150mm@10640nm.
- Optional water cooling design, it can be applied to high-temperature drift requirements.
- Automatic focal adjust option for choose, finish work field and focal length switch through software.
- Focal adjust option: automatic, manual.



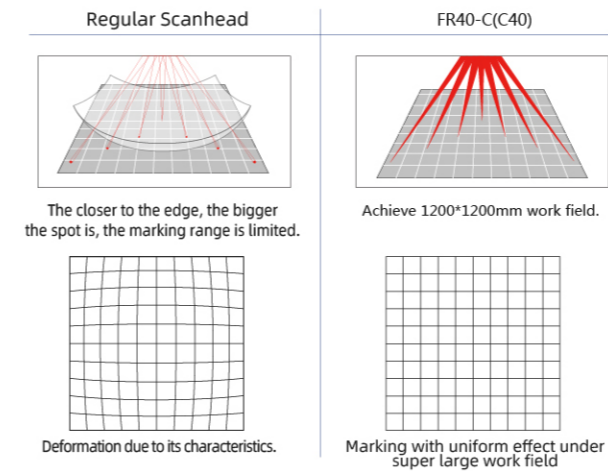
C40 Linear Beam  
Standard system.



C40 Folded Beam  
Specific for folded optical beam design.

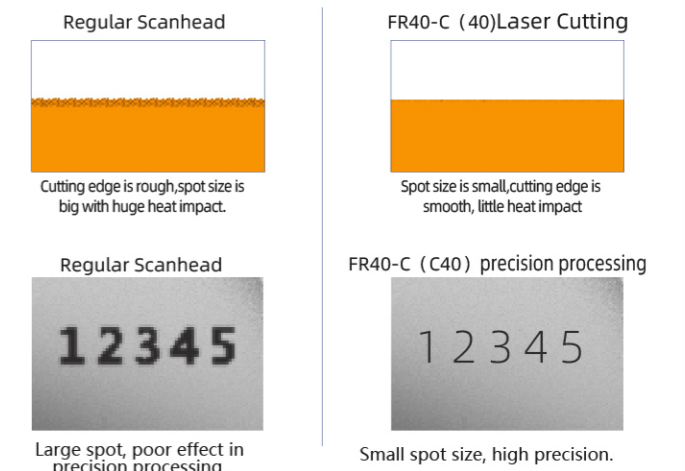
## Flexible large field processing

Through the dynamic focus system control, it can be operated from 150\*150mm to 1200\*1200mm work field.



## Smaller spot size

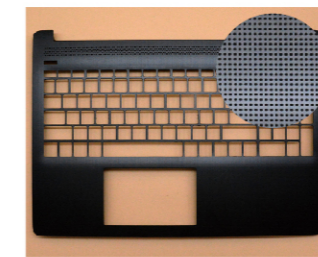
Equal to C30 speed,30% finer focal spot.



## Application Highlight



- Large field marking
- Laser Cutting
- Laser Scribing
- Filming



Laptop shell drilling



Film cutting



Filming

# 40 FR40-C(C40)

Support wavelength:10640nm、10200nm、9400nm

## Product Technical Information

| Technical Info.             |                                   | Specifications                                |   |
|-----------------------------|-----------------------------------|---|---|
| Version                     |                                   | C40 Linear Beam                               | C40 Folded Beam                               |
| Items                       | Input Voltage(VAC)                | 100V60HZ / 220V50HZ                           | 100V60HZ / 220V50HZ                           |
|                             | Output Voltage(VDC)               | ±24 (Analogy Version) / ±28 (Digital Version) | ±24 (Analogy Version) / ±28 (Digital Version) |
|                             | Current(A)                        | 4A (3sets)                                    | 4A (3sets)                                    |
|                             | Output Interface                  | XY2-100 Protocol                              | XY2-100 Protocol                              |
|                             | Input Interface                   | Communication interface USB                   | Communication interface USB                   |
|                             | Weight (KG)                       | 15  | 21.5  |
|                             | Size(mm)                          | 538*200*242.5                                 | 547.5*200*184.5                               |
| Optical Specifications      | Aperture Size(mm)                 | 40  | 40  |
|                             | Input beam diameter(mm)           | 7.5、9、12.5                                    | 7.5、9、12.5                                    |
| Galvanometer Specifications | Scan Angle(°)                     | ±11.5   |   |
|                             | Repeatability(μrad)               | 8   |   |
|                             | Max.Gain Drift(ppm/k)             | 100   |   |
|                             | Max.Offset Drift(μrad/k)          | 30  |   |
|                             | Long-term drift over 8h(mrad)     | ≤0.3  |   |
|                             | Tracking Error(ms)                | ≤0.65   |   |
|                             | Max.processing speed(charaters/s) | 350@400×400                                   |   |

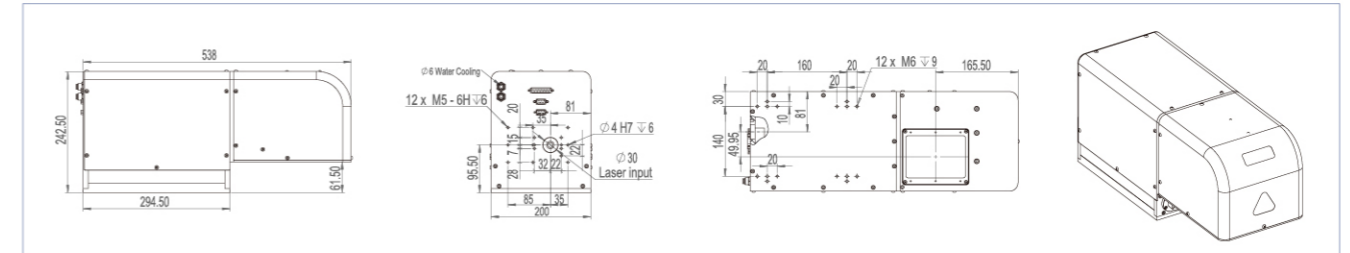
### C40 Linear Beam

| Working Field & Spot Diameter | Working Field(mm)                           | 150×150 | 250×250 | 350×350 | 450×450 | 500×500 | 600×600 | 800×800 | 1000×1000 | 1200×1200 |
|-------------------------------|---|---------|---------|---------|---------|---------|---------|---------|-----------|-----------|
|                               | The Min.Spot Diameter@1/e <sup>2</sup> (mm) | 0.12    | 0.165   | 0.215   | 0.256   | 0.275   | 0.32    | 0.443   | 0.551     | 0.645     |
|                               | Focal length(mm)                            | 216     | 316     | 416     | 516     | 566     | 676     | 976     | 1216      | 1456      |

### C40 Folded Beam

| Working Field & Spot Diameter | Working Field(mm)                           | 150×150 | 250×250 | 350×350 | 450×450 | 500×500 | 600×600 | 800×800 | 1000×1000 | 1200×1200 |
|-------------------------------|---|---------|---------|---------|---------|---------|---------|---------|-----------|-----------|
|                               | The Min.Spot Diameter@1/e <sup>2</sup> (mm) | 0.12    | 0.165   | 0.215   | 0.256   | 0.275   | 0.32    | 0.443   | 0.551     | 0.645     |
|                               | Focal length(mm)                            | 212.5   | 312.5   | 412.5   | 512.5   | 562.5   | 892.5   | 972.5   | 1212.5    | 1452.5    |

### C40 Linear Beam



### C40 Folded Beam

