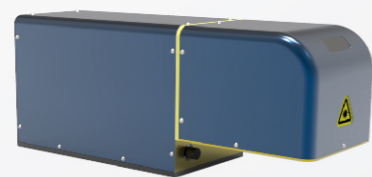
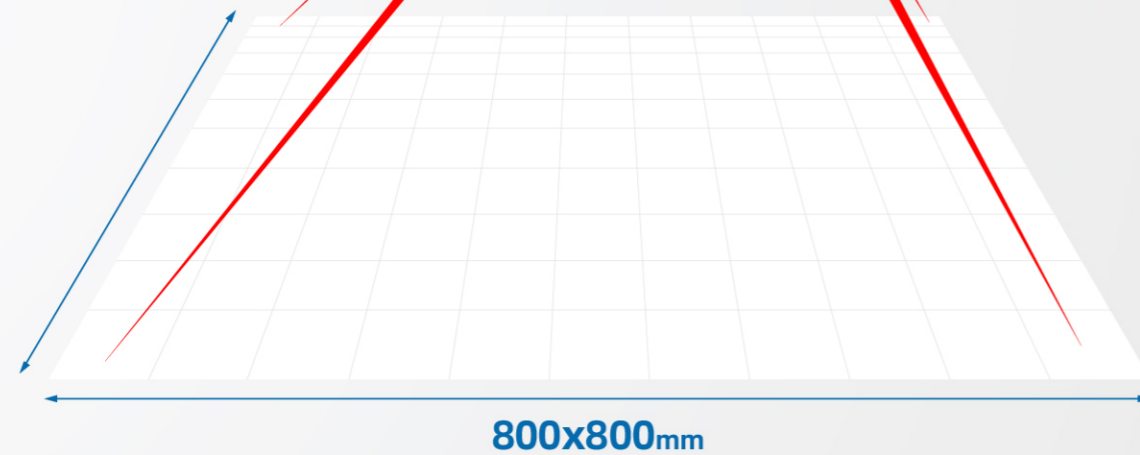


30 FR30-C(C30)

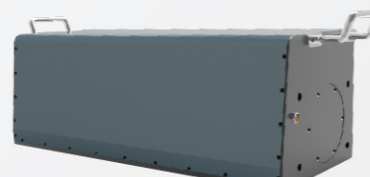
Support wavelength:10640nm、10200nm、9400nm

High-end industry application Regular large field processing

- Optional water cooling design, it can be applied to high-temperature drift requirements.
- Double driving Z axis dynamic focus module design, response frequency $\geq 100\text{HZ} @ \pm 10^\circ$.
- According to application requirements and integration space, there are curved version, large field version, and multiple mechanical design options.
- The optional off-axis CCD module, applied in positioning marking in moving line.



C30 Linear Beam Standard system.



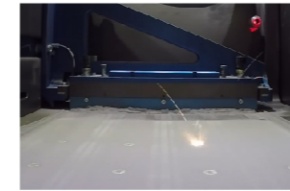
C30 Folded Beam (Left-Right)
Specific for ODM integration in space limited workshop.



C30 compact version
Better heat dissipation, compact structure, suitable for high temperature and space limited workshop.

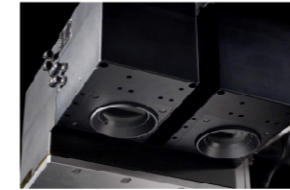
Highlight application: 3D printing

FR30-C(C30) applies with the dynamic focus system control, it can be applied in SLS, SLM.



High Precision

As the number of processing layers increases, the dynamic axis coordinately adjust the focus and adjust the spot in real-time. The minimum spot of FR30-C(C30) can directly reach 0.11mm.

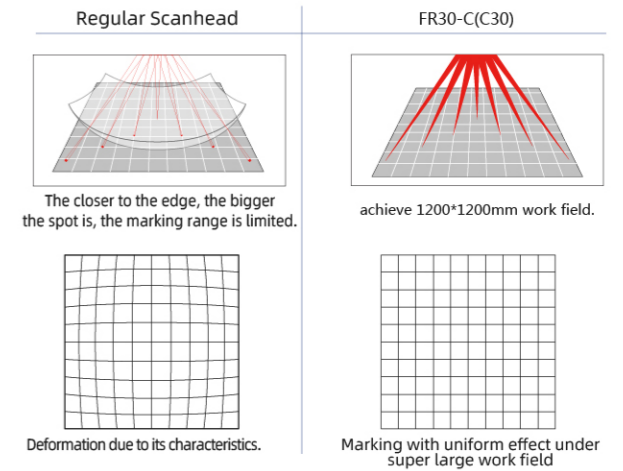


High Efficiency

To improve higher processing efficiency, FEELTEK develops the multi-scanheads solution, as well as its corresponding platform.

Flexible large field processing

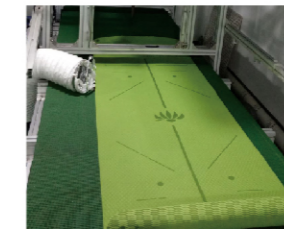
Through the dynamic focus system control, it can be operated from 300*300mm to 1200*1200mm work field.



Application Highlight



- Laser Cutting
- Laser Marking
- Cleaning
- High speed fly Processing
- 3D application
- 3D printing
- Laser Scribing
- Filming
- Curved surface moving line marking



Moving line marking (Yoga mat)



3D surface marking



Large field marking (Jeans)



Jeans laser marking



Leather marking



3D printing

30 FR30-C (C30)

Support wavelength:10640nm、10200nm、9400nm

Product Technical Information

| Technical Info. | | Specifications | | |
|-----------------------------|-----------------------------------|-----------------------------|-----------------------------|-----------------------------|
| Version | | C30 Linear Beam | C30 Folded Beam | C30 compact version |
| Items | Input Voltage(VAC) | 100V60HZ / 220V50HZ | 100V60HZ / 220V50HZ | 100V60HZ / 220V50HZ |
| | Output Voltage(VDC) | ±24VDC | ±24VDC | ±15VDC |
| | Current(A) | 5A (2 Sets) | 5A (2 Sets) | 5A (2 Sets) |
| | Output Interface | XY2-100 Protocol | XY2-100 Protocol | XY2-100 Protocol |
| | Input Interface | Communication interface USB | Communication interface USB | Communication interface USB |
| | Weight (KG) | 15 | 21 | 13.5 |
| | Size(mm) | 538*200*242.5 | 528*200*206 | 422*145*163 |
| Optical Specifications | Aperture Size(mm) | 30 | 30 | 30 |
| | Input beam diameter(mm) | 7.5、9 | 7.5、9 | 7.5、9、15 |
| Galvanometer Specifications | Product line | Standard | Pro | P2 |
| | Scan Angle(°) | ±11 | ±11 | ±11 |
| | Repeatability(μrad) | 8 | 8 | 5 |
| | Max.Gain Drift(ppm/k) | 100 | 100 | 50 |
| | Max.Offset Drift(μrad/k) | 30 | 30 | 15 |
| | Long-term drift over 8h(mrad) | ≤0.3 | ≤0.3 | ≤0.1 |
| | Tracking Error(ms) | ≤0.4 | ≤0.4 | ≤0.1 |
| | Max.processing speed(charaters/s) | 350@400×400 | 350@400×400 | 350@400×400 |

C30 Linear Beam

| Working Field & Spot Diameter | Working Field(mm) | 300×300 | 400×400 | 500×500 | 600×600 | 750×750 | 800×800 | 1200×1200 | 1600×1600 | |
|-------------------------------|---|---------|---------|---------|---------|---------|---------|--------------------|-----------|--|
| | The Min.Spot Diameter@1/e ² (mm) | 0.230 | 0.280 | 0.330 | 0.390 | 0.460 | 0.490 | Customized version | | |
| | Focal length(mm) | 366 | 466 | 566 | 676 | 838 | 896 | | | |

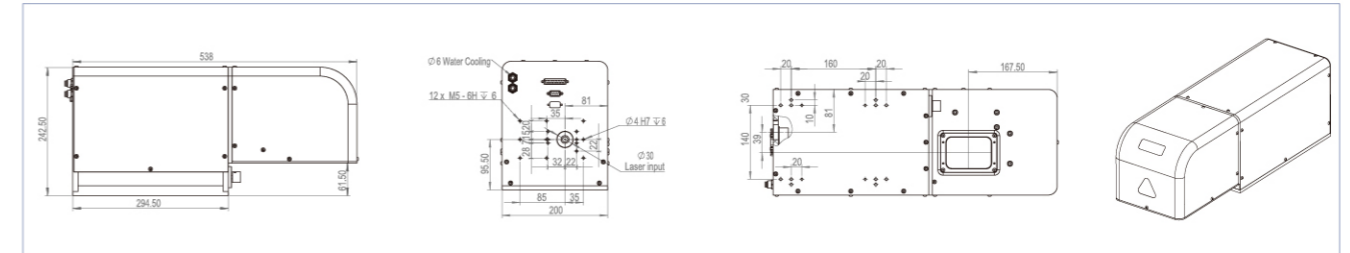
C30 Folded Beam

| Working Field & Spot Diameter | Working Field(mm) | 300×300 | 400×400 | 500×500 | 600×600 | 750×750 | 800×800 | 1200×1200 | 1600×1600 | |
|-------------------------------|---|---------|---------|---------|---------|---------|---------|--------------------|-----------|--|
| | The Min.Spot Diameter@1/e ² (mm) | 0.230 | 0.280 | 0.330 | 0.390 | 0.460 | 0.490 | Customized version | | |
| | Focal length(mm) | 362.5 | 462.5 | 562.5 | 672.5 | 837.5 | 892.5 | | | |

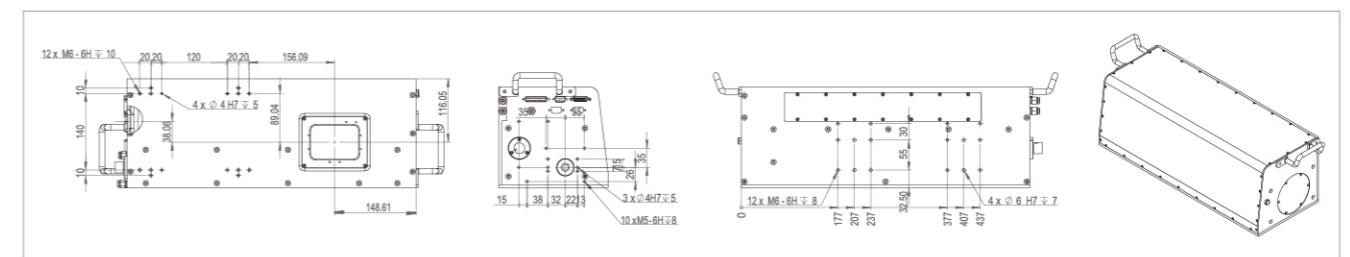
C30 compact version

| Working Field & Spot Diameter | Working Field(mm) | 100×100 | 200×200 | 300×300 | 400×400 | 500×500 | 600×600 | 1200×1200 | |
|-------------------------------|---|---------|---------|---------|---------|---------|---------|--------------------|--|
| | The Min.Spot Diameter@1/e ² (mm) | 0.11 | 0.16 | 0.21 | 0.27 | 0.32 | 0.36 | Customized version | |
| | Focal length(mm) | 136 | 256 | 366 | 466 | 566 | 676 | | |

C30 Linear Beam



C30 Folded Beam



C30 compact version

