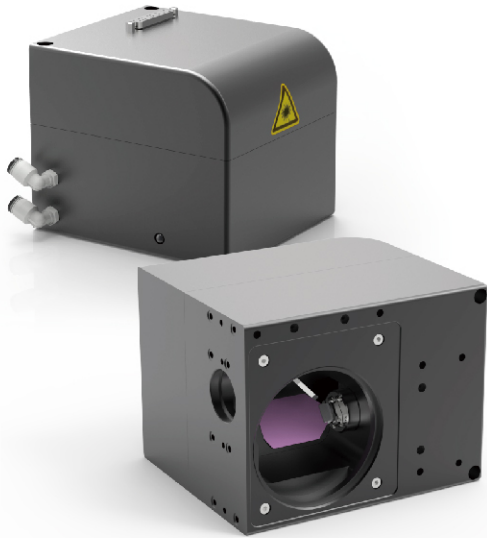


# 2D Scanhead-15 Serial

Support wavelength: :355、532、1064、980nm

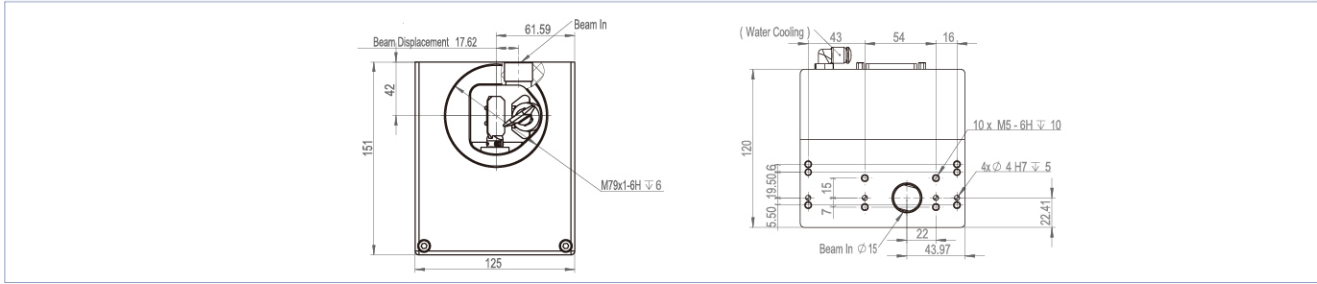


## 15 Serial

- Water cooling and air cooling for selection.
- Multiple SLS,SLM application configuration.
- High speed for laser cleaning, laser welding.
- High precision for 3D printing, scribing, etching.

### PRODUCT TECHNICAL DATA

	Technical Info.	Specifications		
Optical Specifications	Size(mm)	15		
	Input beam diameter(mm)	15		
	Available Wavelength(nm)	355	532	1064/980
Optical Paramater	Optical Surface	1/4λ@633		
	Optical Material	Si / SiC		
Galvanometer Specifications	Version	3		
	Weight (KG)	151x125x120		
	Size(mm)	S15	PS15	PSH15
	Scan Angle(°)	±11	±10	±10
	Repeatability(μrad)	8	5	5
	Max.Gain Drift(ppm/k)	100	50	50
	Max.Offset Drift(μrad/k)	30	30	30
	Long-term drift over 8h(mrad)	≤0.5	≤0.1	≤0.1
	Max.processing speed(charaters/s)	500	700	700
Tracking Error(ms)	≤0.23	≤0.15	≤0.15	



FR-10mm  
3D Serial

FR-15mm  
3D Serial

FR-20mm  
3D Serial

FR-30mm  
3D Serial

FR-40mm  
3D Serial

FR-70mm  
3D Serial

FE  
2.5D Serial

2D Serial

Module  
&  
Control System

Software  
&  
Application Platform